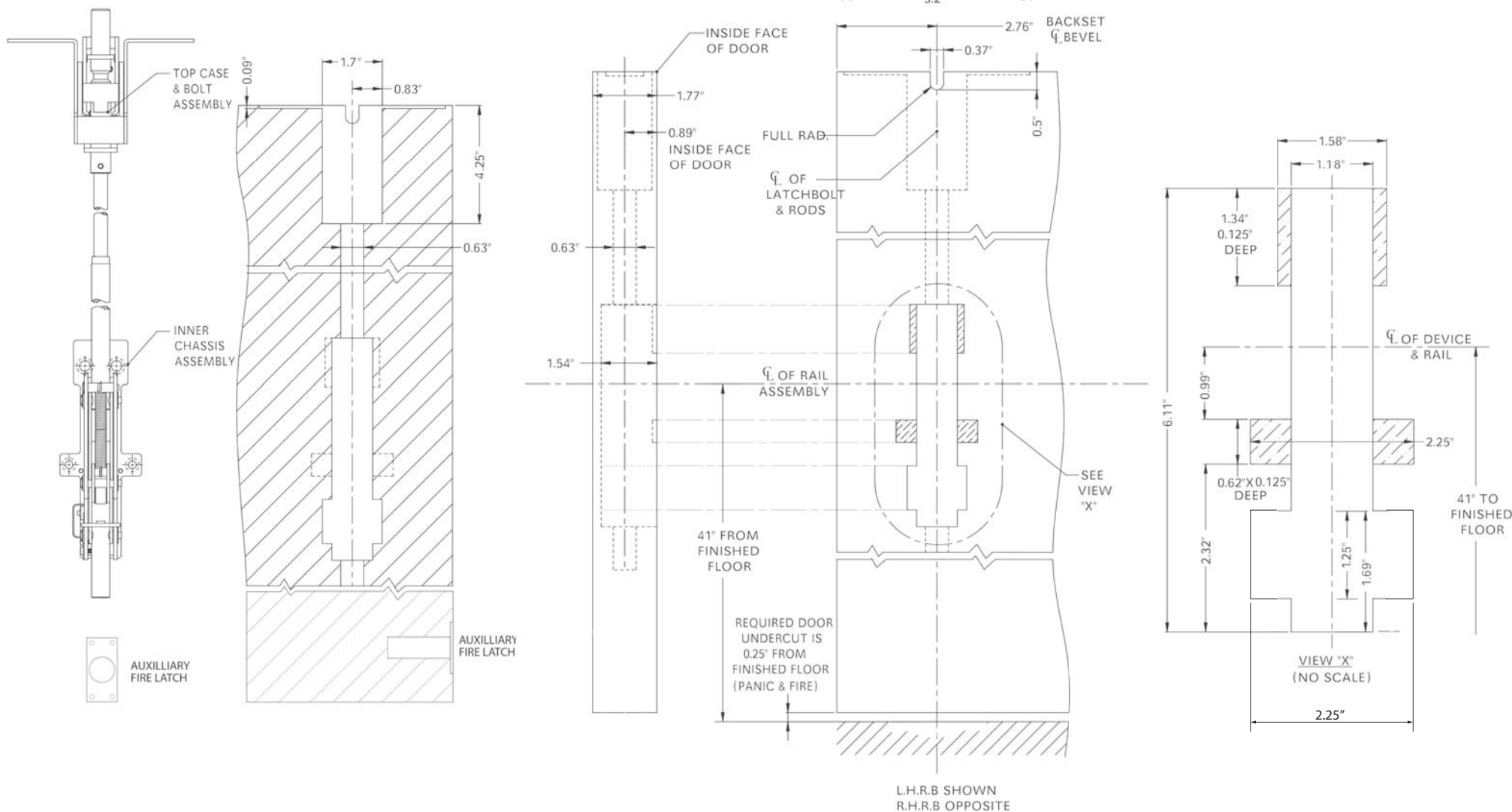


INSTRUCTIONS FOR INSTALLING CAL-ROYAL LBRFWCVR9800 SERIES FIRE RATED CONCEALED VERTICAL LESS BOTTOM ROD EXIT DEVICE

PREPARE DOOR

Prepare Top Strike to Wood frame template

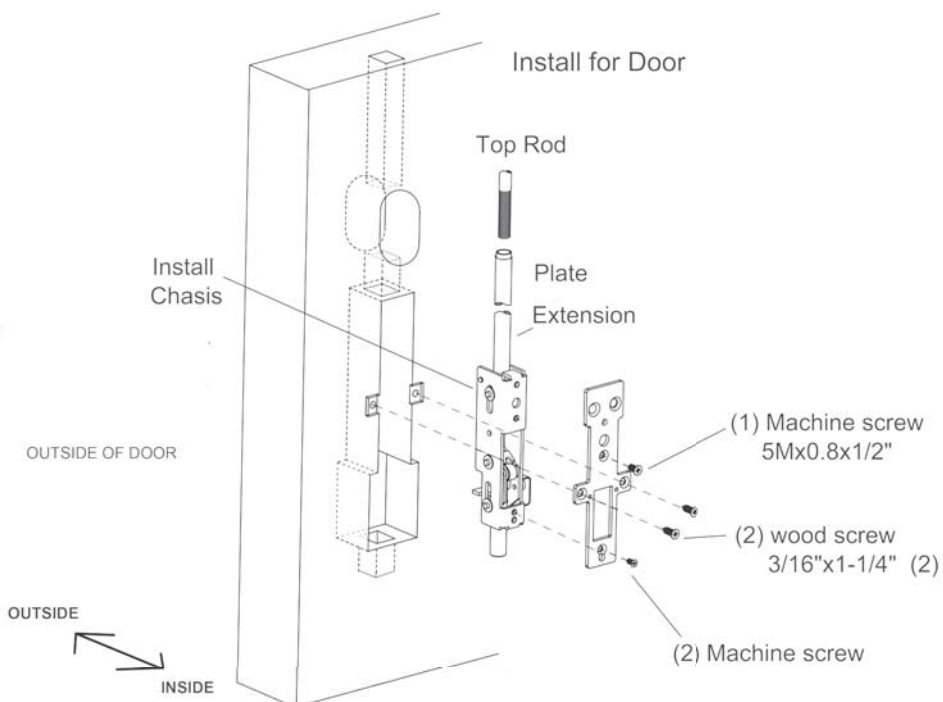


NO SCALE

STEP 1

INSTRUCTIONS FOR INSTALLING CAL-ROYAL FWCVR9800LBR SERIES CONCEALED VERTICAL ROD EXIT DEVICE

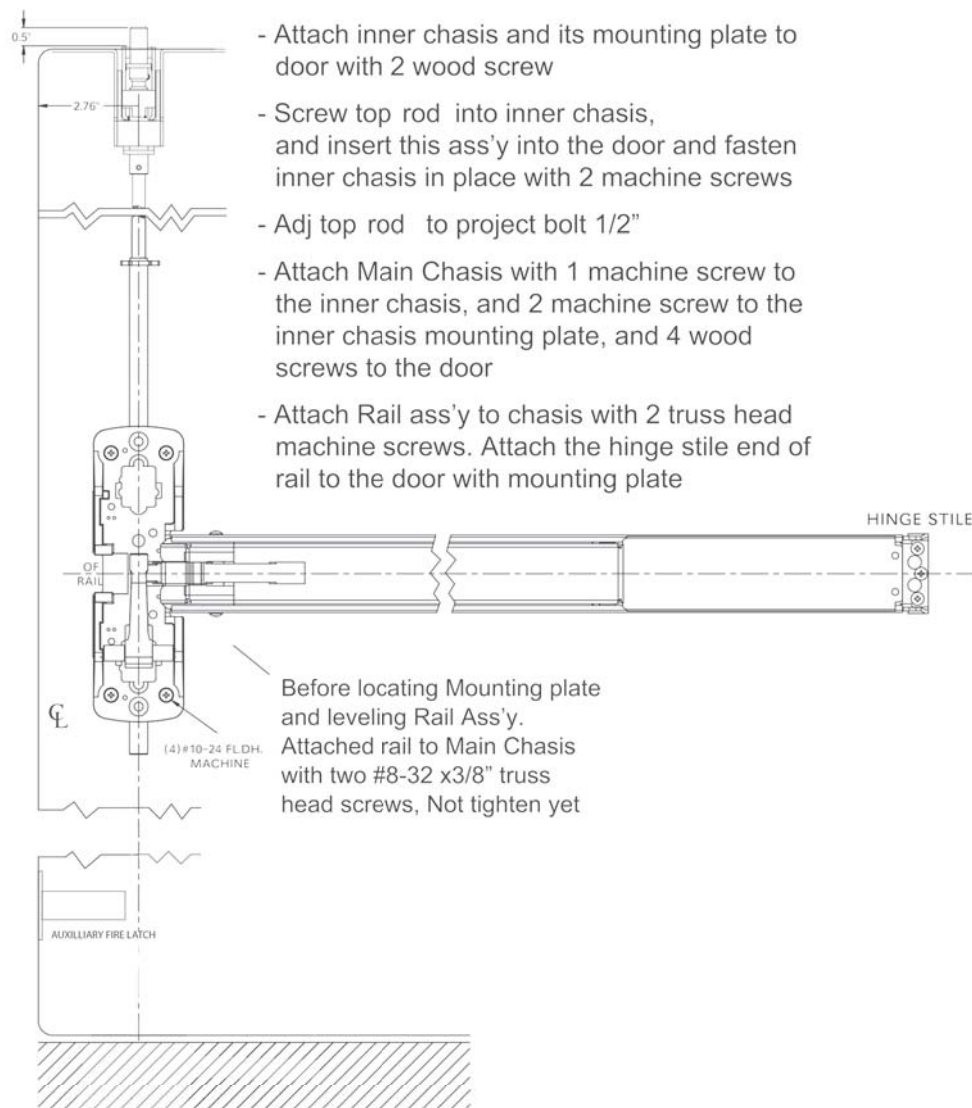
1. Thru Inner Chassis cutout in the door, insert the extension in the door
2. Insert Inner chassis in the cutout, and insert reduced end of extension in top threaded bushing on inner chassis, and fasten the rod extension with 1 machine screw
3. On outside of door thru the cutout, install Plate into extension in the door
4. Attach mounting plate to inner chassis with 2 machine screws, then attach mounting plate to the door with 2 wood screws



STEP 2

MOUNT ROD & CHASIS

Use Strike Furnished



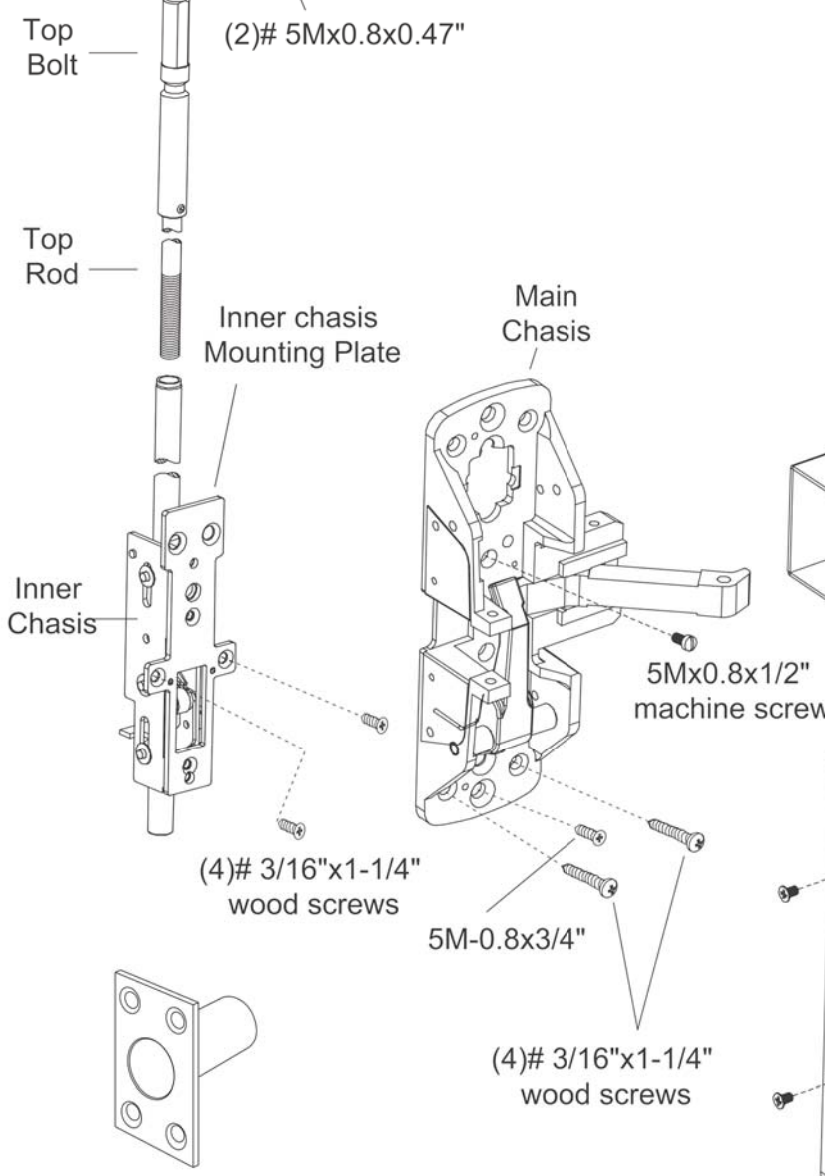
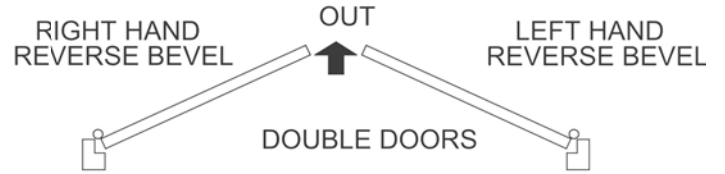
INSTRUCTIONS FOR INSTALLING CAL-ROYAL LBRFWCVR9800 SERIES FIRE RATED CONCEALED VERTICAL LESS BOTTOM ROD EXIT DEVICE

(6)# 1/4"x2

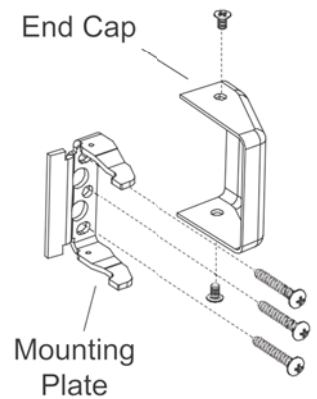
Available stock length

- For 32" doors, Device can be cut to fit doors down to 24" wide
- For 36" doors, Device can be cut to fit doors down to 32" wide
- For 48" doors, Device can be cut to fit doors down to 36" wide

THIS EXIT DEVICE IS HANDED
CHECK HAND OF DEVICE AGAINST APPLICATION



Door Surface must be flush to allow Exit Device rest on flat surface of the door



MOUNT TRIM

ATTACH OUTSIDE TRIM IF USED

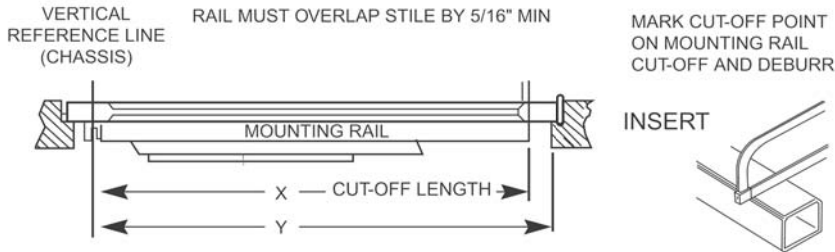
IF AN OUTSIDE AUXILIARY CONTROL IS USED, SEE THE INSTRUCTION SHEET PACKED WITH THE CONTROL

AUXILLIARY FIRE LATCH
SEE PAGE 3 FOR INSTALLATION INSTRUCTIONS

STEP 3

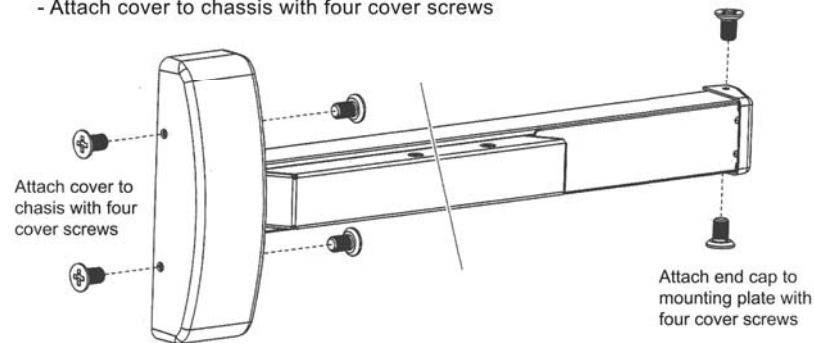
3. MOUNT RAIL ASS'Y

- 3.1. Determine cut-off dimension "X" by subtracting 1-1/8" from dimension "Y"
- 3.2. Depress arm into rail opening and slide rail onto chassis
- 3.3. With push rail depressed, adj top bolt flush with top of the door
- 3.4. Insert top chassis into cutout at the top of the door, and attach with six wood screws



4. ATTACH COVER

- Attach end cap to mounting plate with two cover screws
- Attach cover to chassis with four cover screws



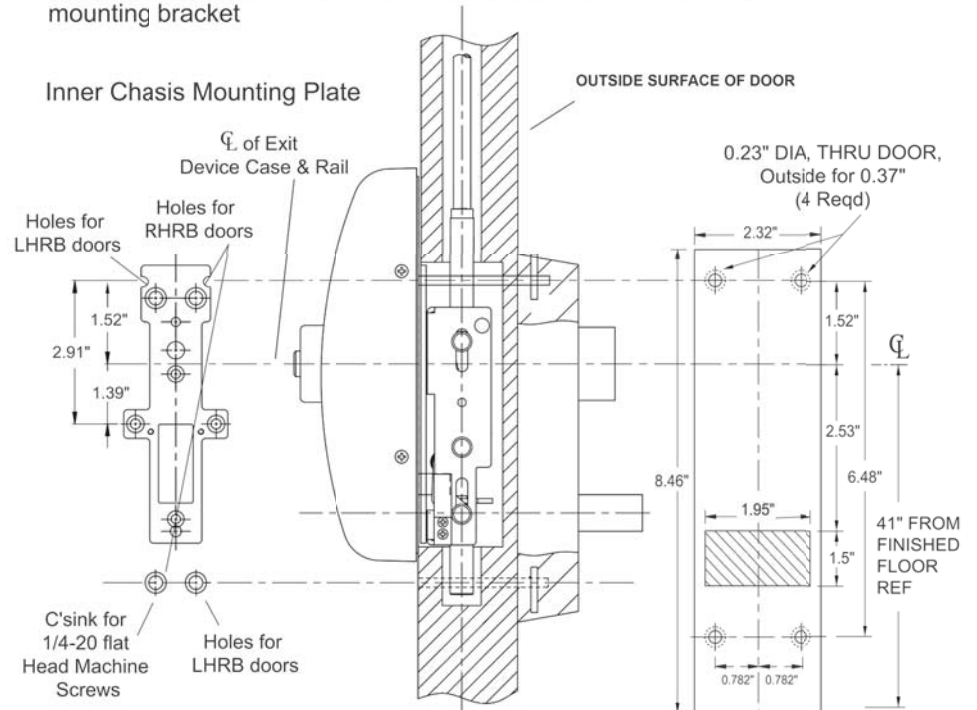
5. OPERATION CHECK

- 5.1. Depress Pushrail, bolt should retract into door.
The latch retractor button should pop out and hold the bolt retracted until button is depressed
- 5.2. If button does not pop out, remove top chassis and screw the top rod in one turn. Replace top chassis and repeat abv operation

STEP 4

INSTRUCTIONS FOR INSTALLING CAL-ROYAL ESC LEVER TRIM FOR WCVR9800 SERIES CONCEALED VERTICAL ROD EXIT DEVICE (see also TRIM template & installation instructions)

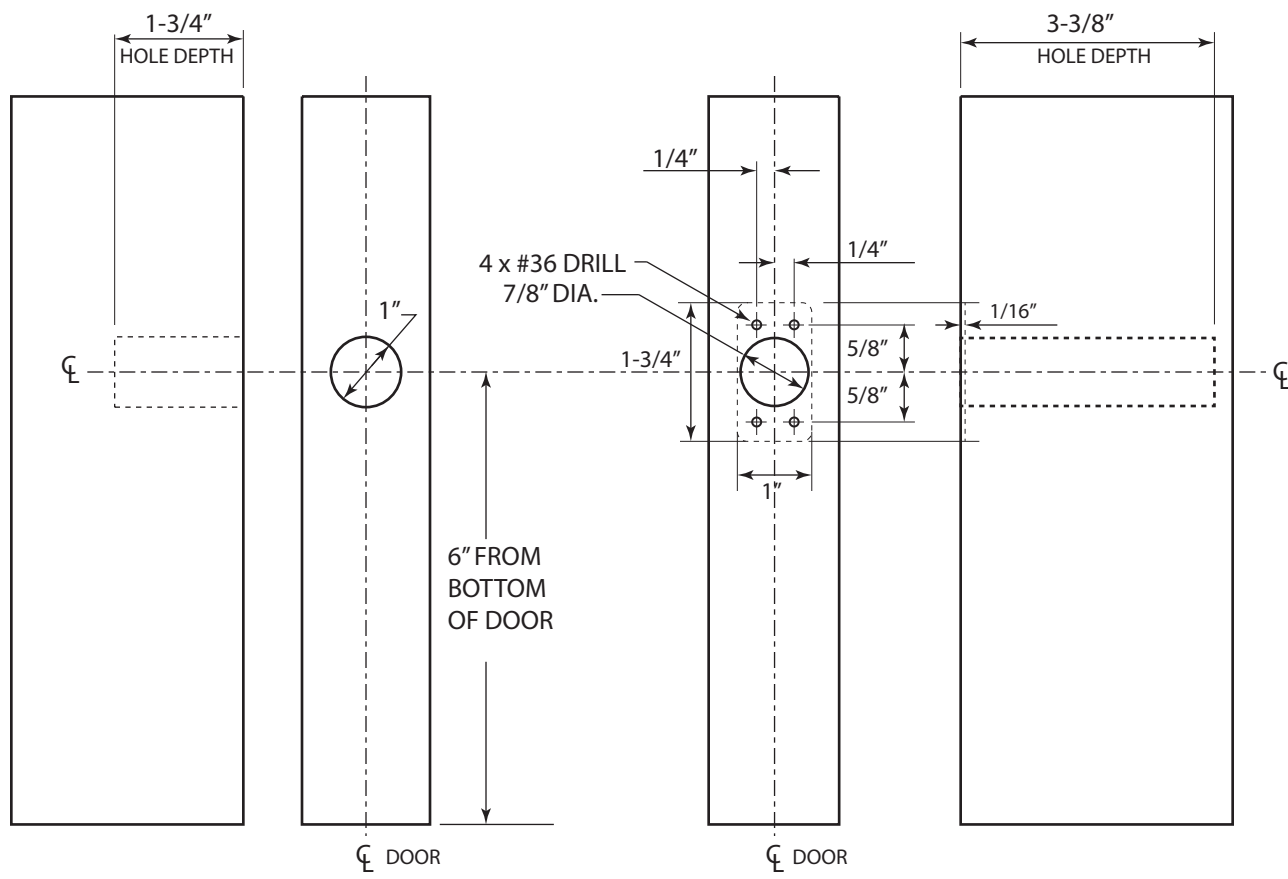
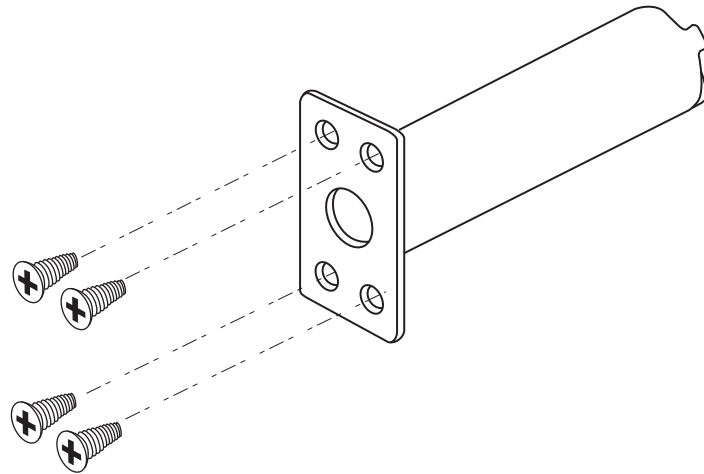
1. Thru Inner Chasis cutout in the door, insert the extension in the door
2. Insert Inner chasis in the cutout, and insert reduced end of extension in top threaded bushing on inner chasis, and fasten the rod extension with 1 machine screw
3. On outside of door thru the cutout, install Plate into extension in the door
4. Before attaching main chasis and inner chasis to the door, attach esc lever trim to the door with (2) 1/4-20 x 2-3/8" flat head machine screws
5. Then attach Rail Ass'y to the chassis, and hinge stile end of rail to the door with mounting bracket



DESCRIPTION	QTY.
AUXILLIARY FIRE LATCH ASSEMBLY	1
#6 8-32 x 3/4" COMBO MS/WS	4
STRIKE HOLE PLUG	1



STRIKE HOLE PLUG



**STRIKE HOLE PLUG
DOOR LEAF**

**AUXILLIARY FIRE LATCH ASSEMBLY
DOOR LEAF**



6605 Flotilla St.
City of Commerce
CA 90040 USA
Tel: (323) 888-6601
FAX: (323) 888-6699
Website: cal-royal.com
Email: sales@cal-royal.com

ITEM NO:	DESCRIPTION:	SCALE:	PAGE:
AUXFL	AUXILLIARY FIRE LATCH	NOT TO SCALE	PAGE 3 of 3
ANSI:	UNIT:	VERSION:	BY:
	inches [mm]	ver. 2.0 rev. 01/16	bteves/adg/sac